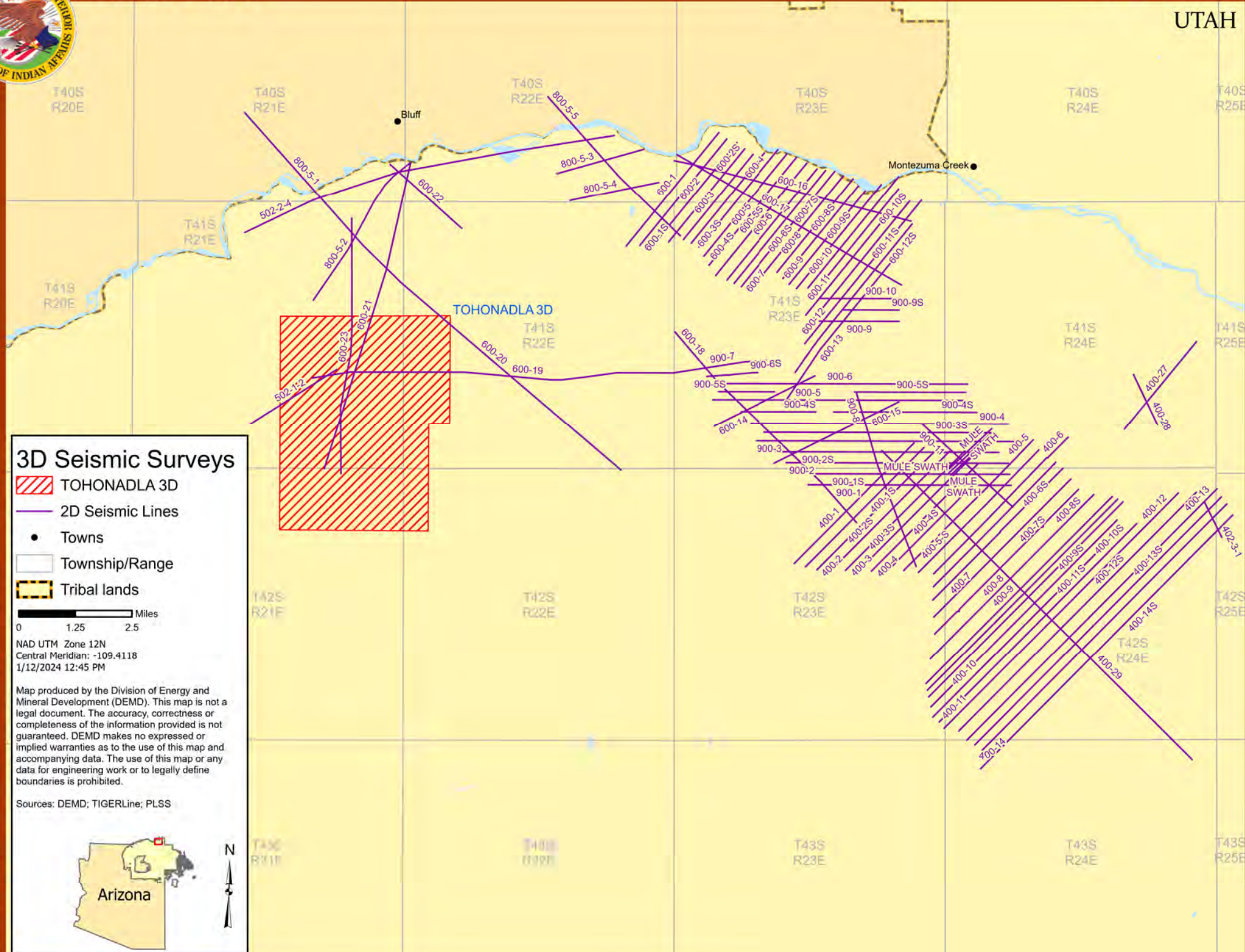
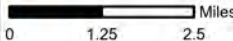


SEISMIC MAP



3D Seismic Surveys

-  TOHONADLA 3D
-  2D Seismic Lines
-  Towns
-  Township/Range
-  Tribal lands

 Miles
 0 1.25 2.5
 NAD UTM Zone 12N
 Central Meridian: -109.4118
 1/12/2024 12:45 PM

Map produced by the Division of Energy and Mineral Development (DEMD). This map is not a legal document. The accuracy, correctness or completeness of the information provided is not guaranteed. DEMD makes no expressed or implied warranties as to the use of this map and accompanying data. The use of this map or any data for engineering work or to legally define boundaries is prohibited.

Sources: DEMD; TIGERLine; PLSS



2D SEISMIC LINES

NAME	PROD	MILES	LOC	SHOT	NAME	PROD	MILES	LOC	SHOT	NAME	PROD	MILES	LOC	SHOT
400-1	F, S, M	3.75	T41S R23E	1990	600-7	F, S, M	3.29	T41S R23E	1990	900-1S	S, M	4.44	T42S R24E	1991
400-1S	F, S, M	3.71	T41S R23E	1990	600-7S	F, S, M	2.96	T41S R23E	1990	900-2S	S, M	4.92	T41S R23E	1991
400-2	F, S, M	3.66	T41S R23E	1990	600-8	F, S, M	2.66	T41S R23E	1990	MULE SWATH	F, S	3.88	T42S R24E	1996
400-3	F, S, M	3.73	T42S R24E	1990	600-8S	F, S, M	2.63	T41S R23E	1990					
400-3S	F, S, M	3.52	T42S R24E	1990	600-9	F, S, M	2.66	T41S R23E	1990					
400-4	F, S, M	3.33	T42S R24E	1990	600-9S	F, S, M	2.97	T41S R23E	1990					
400-4S	F, S, M	2.81	T42S R24E	1990	600-10	F, S, M	3.16	T41S R23E	1990					
400-5	F, S, M	4.06	T42S R24E	1989	600-10S	F, S, M	3.13	T41S R23E	1990					
400-5-S	F, S, M	3.79	T42S R24E	1990	600-11	F, S, M	3.25	T41S R23E	1990					
400-6	F, S, M	4.24	T42S R24E	1990	600-11S	F, S, M	3.64	T41S R23E	1990					
400-6S	F, S, M	3.87	T42S R24E	1990	600-12	F, S, M	4.08	T41S R23E	1990					
400-7	F, S, M	4.09	T42S R24E	1990	600-12S	F, S, M	4.17	T41S R23E	1990					
400-7S	F, S, M	4.29	T42S R24E	1990	600-13	F, S, M	4.33	T41S R23E	1990					
400-8	F, S, M	4.55	T42S R24E	1990	600-14	F, S, M	2.50	T41S R23E	1990					
400-8S	F, S, M	5.12	T42S R24E	1990	600-15	F, S, M	3.08	T41S R23E	1990					
400-9	F, S, M	5.83	T42S R24E	1990	600-16	F, S, M	5.41	T41S R23E	1990					
400-9S	F, S, M	5.96	T42S R24E	1990	600-17	F, S, M	5.75	T41S R23E	1990					
400-10	F, S, M	6.08	T42S R24E	1990	600-18	F, S, M	5.83	T41S R22E	1990					
400-10S	F, S, M	5.83	T42S R24E	1990	600-19	F, S, M	10.08	T41S R21E	1990					
400-11	F, S, M	5.58	T42S R24E	1990	600-1S	F, S, M	3.04	T41S R23E	1990					
400-11S	F, S, M	6.18	T42S R24E	1990	600-20	F, S, M	6.39	T41S R22E	1990					
400-12	F, S, M	7.33	T42S R24E	1990	600-21	F, S, M	7.04	T41S R21E	1990					
400-12S	F, S, M	7.43	T42S R24E	1990	600-22	F, S, M	2.12	T41S R22E	1990					
400-13	F, S, M	7.83	T42S R24E	1990	600-23	O	5.66	T41S R21E	1990					
400-13S	F, S, M	7.72	T42S R24E	1989	800-5-1	F, S, M	5.10	T41S R21E	1990					
400-14	F, S, M	8.53	T42S R24E	1989	800-5-2	F, S, M	3.75	T41S R21E	1990					
400-14S	F, S, M	7.89	T42S R24E	1989	800-5-3	F, S, M	2.00	T41S R22E	1990					
400-27	F, S, M	2.50	T41S R24E	1989	800-5-4	F, S, M	2.00	T41S R22E	1990					
400-28	F, S, M	1.23	T41S R24E	1989	800-5-5	F, S, M	4.25	T41S R22E	1990					
400-29	F, S, M	9.66	T42S R24E	1989	900-1	S, M	4.48	T42S R24E	1991					
400-2S	F, S, M	3.71	T42S R24E	1990	900-2	S, M	4.91	T42S R24E	1991					
402-3-1	F, S, M	0.87	T42S R25E	1988	900-3	S, M	5.69	T41S R23E	1991					
502-1-2	F, S, M	2.25	T41S R21E	1989	900-3S	S, M	4.98	T41S R23E	1991					
502-2-4	F, S, M	8.56	T41S R21E	1989	900-4	S, M	5.69	T41S R23E	1991					
600-1	F, S, M	3.25	T41S R23E	1990	900-4S	S, M	4.82	T41S R23E	1991					
600-2	F, S, M	2.91	T41S R23E	1990	900-5	S, M	5.57	T41S R23E	1991					
600-2S	F, S, M	2.67	T41S R23E	1990	900-5S	S, M	3.72	T41S R23E	1991					
600-3	F, S, M	2.44	T41S R23E	1990	900-6	S, M	5.63	T41S R23E	1991					
600-3S	F, S, M	2.58	T41S R23E	1990	900-6S	S, M	1.15	T41S R23E	1991					
600-4	F, S, M	2.79	T41S R23E	1990	900-7	O	1.89	T41S R22E	1991					
600-4S	F, S, M	2.92	T41S R23E	1990	900-8	S, M	4.06	T41S R23E	1991					
600-5	F, S, M	3.08	T41S R23E	1990	900-9	S, M	1.76	T41S R23E	1991					
600-5S	F, S, M	3.21	T41S R23E	1990	900-9S	S, M	1.24	T41S R23E	1991					
600-6	F, S, M	3.16	T41S R23E	1990	900-10	S, M	1.76	T41S R23E	1991					
600-6S	F, S, M	3.22	T41S R23E	1990	900-11	S, M	2.73	T42S R24E	1991					

3D SEISMIC SURVEYS

NAME	PROD	SQ MI	LOC	SHOT
TOHONADLA 3D	F, S, M, G	16.66	T41S R21E	2006

