

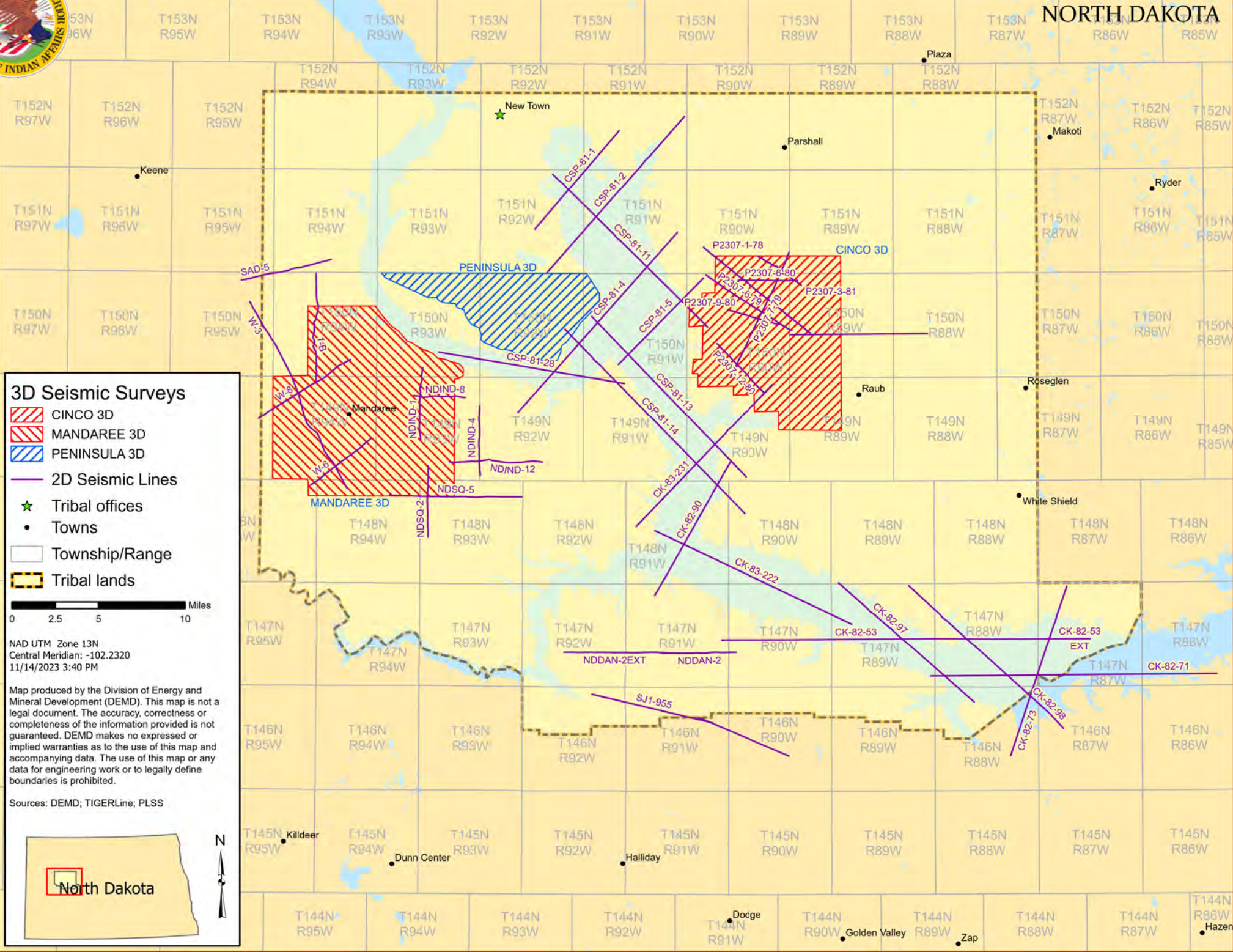


SEISMIC MAP

Three Affiliated Tribes

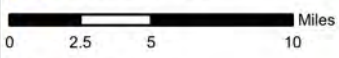
NORTH DAKOTA

FORT BERTHOLD RESERVATION



3D Seismic Surveys

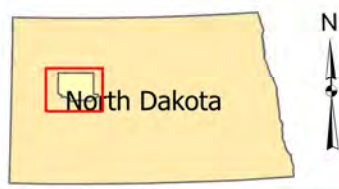
- CINCO 3D
- MANDAREE 3D
- PENINSULA 3D
- 2D Seismic Lines
- Tribal offices
- Towns
- Township/Range
- Tribal lands



NAD UTM Zone 13N
 Central Meridian: -102.2320
 11/14/2023 3:40 PM

Map produced by the Division of Energy and Mineral Development (DEMD). This map is not a legal document. The accuracy, correctness or completeness of the information provided is not guaranteed. DEMD makes no expressed or implied warranties as to the use of this map and accompanying data. The use of this map or any data for engineering work or to legally define boundaries is prohibited.

Sources: DEMD; TIGERLine; PLSS



2D SEISMIC LINES

NAME	PROD	MILES	LOC	SHOT
1-B	F, S, M	6.27	T150N R94W	1979
78J-024	F, S, M	12.30	T150N R95W	1978
78J-027	F, S, M	4.42	T149N R94W	1978
78J-029	F, S, M	6.32	T150N R94W	1978
81-475-054	F	5.69	T146N R91W	1981
EEl-81-CSP-01	F, S, M	7.52	T152N R91W	1981
EEl-81-CSP-02	F, S, M	12.08	T152N R91W	1981
EEl-81-CSP-04	F, S, M	13.87	T151N R91W	1981
EEl-81-CSP-05	F, S, M	7.00	T150N R91W	1981
EEl-81-CSP-11	F, S, M	12.58	T151N R92W	1981
EEl-81-CSP-13	F, S, M	12.88	T150N R91W	1981
EEl-81-CSP-14	F, S, M	14.88	T150N R92W	1981
EEl-82-CK-53	F, S, M	31.27	T147N R91W	1982
EEl-82-CK-53EXT	F, S, M	5.69	T147N R88W	1982
EEl-82-CK-71	F, S, M	16.54	T147N R89W	1982
EEl-82-CK-73	F, S, M	10.30	T147N R87W	1982
EEl-82-CK-90	F, S, M	8.83	T148N R91W	1982
EEl-82-CK-97	F, S, M	10.44	T147N R89W	1982
EEl-82-CK-98	F, S, M	12.18	T147N R89W	1982
EEl-83-CK-222	F, S, M	12.63	T148N R91W	1983
EEl-83-CK-231	F, S, M	11.42	T148N R91W	1983
EEX-81-CSP-28	F, S, M	10.88	T150N R93W	1981
NDDAN-2	F	4.26	T147N R91W	1978
NDDAN-2EXT	F	5.85	T147N R92W	1978
NDIND-1	F	4.24	T150N R93W	1978
NDIND-12	F	5.44	T149N R93W	1978
NDIND-4	F	4.06	T149N R93W	1978
NDIND-8	F	3.01	T149N R93W	1978
NDSQ-2	F	4.11	T149N R93W	1979
NDSQ-5	F	7.65	T148N R94W	1979
P2307-12-8	F, S, M	3.93	T150N R90W	1980
P2307-1-78	F, S, M	7.94	T151N R90W	1978
P2307-3-81	F, S, M	3.11	T151N R90W	1978
P2307-6-79	F, S, M	5.96	T150N R90W	1979
P2307-6-80	F, S, M	3.46	T150N R90W	1980
P2307-7-79	F, S, M	7.99	T151N R90W	1979
P2307-9-80	F, S, M	3.04	T150N R90W	1980
SAD-5	F	5.32	T151N R94W	1978
SEI-307	S	7.96	T150N R89W	1978
SJI-955	F	7.18	T146N R92W	1982

3D SEISMIC SURVEYS

NAME	PROD	SQ MI	LOC	SHOT
CINCO	F	72.45	T150N R90W	2011
MANDAREE 3D	F, M	96.14	T150N R94W	2009
PENINSULA 3D	F, M	36.03	T150N R93W	2009

UNMAPPED DATA

NAME	PROD	MILES	SHOT
P2307-3-81(2)	F	3.00	1981

