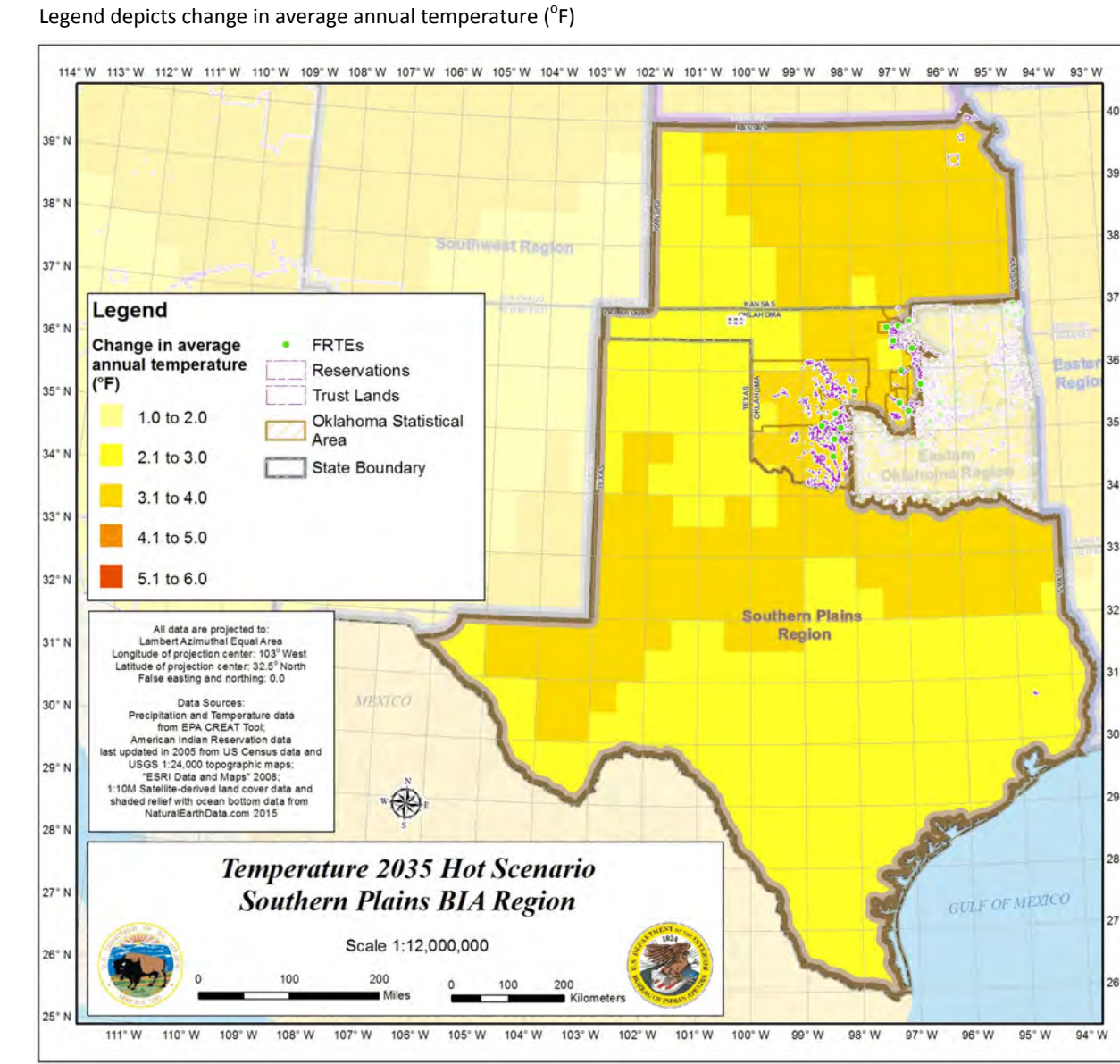
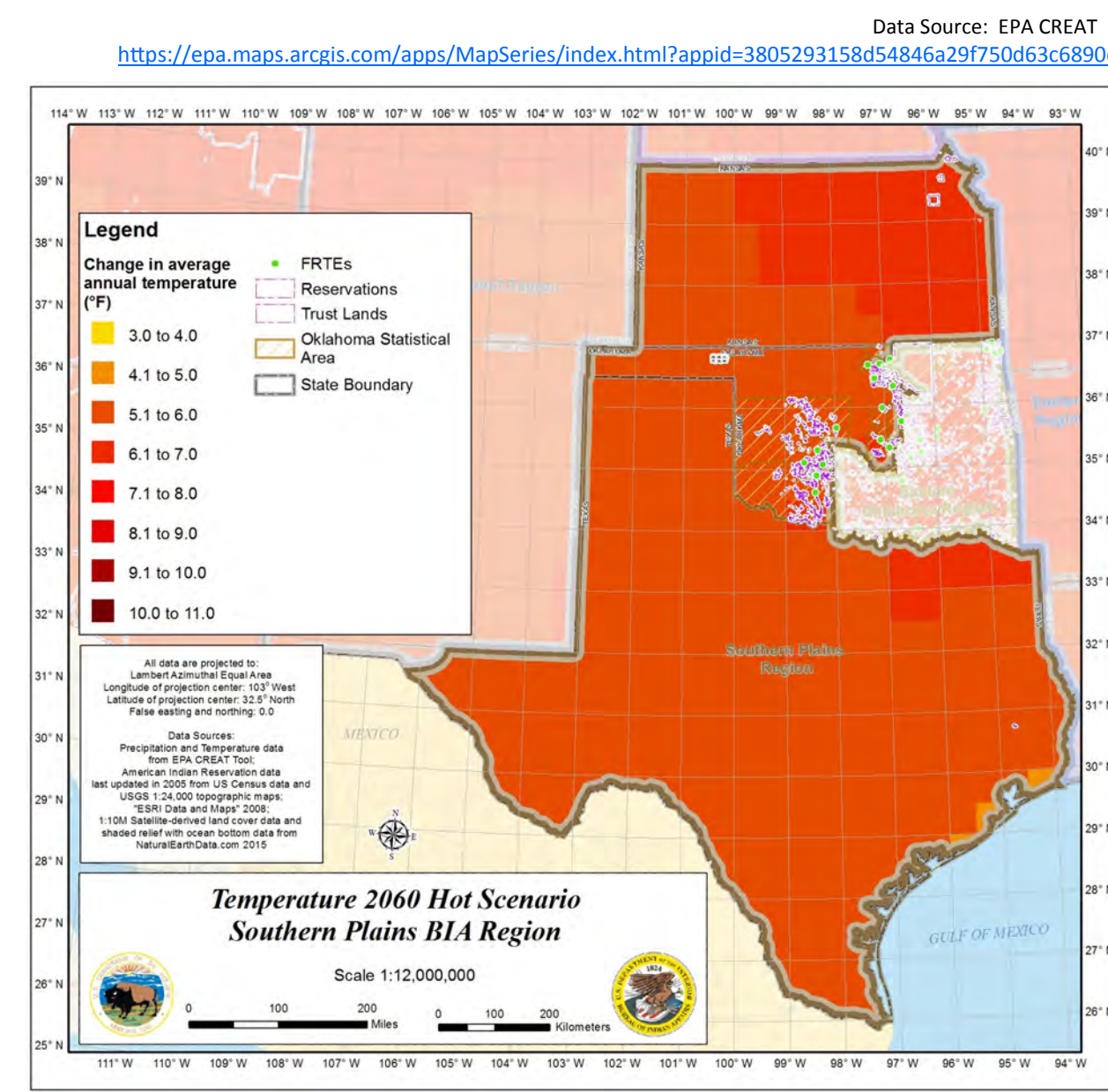


# GIS for Tribal Resilience — BIA Southern Plains Region

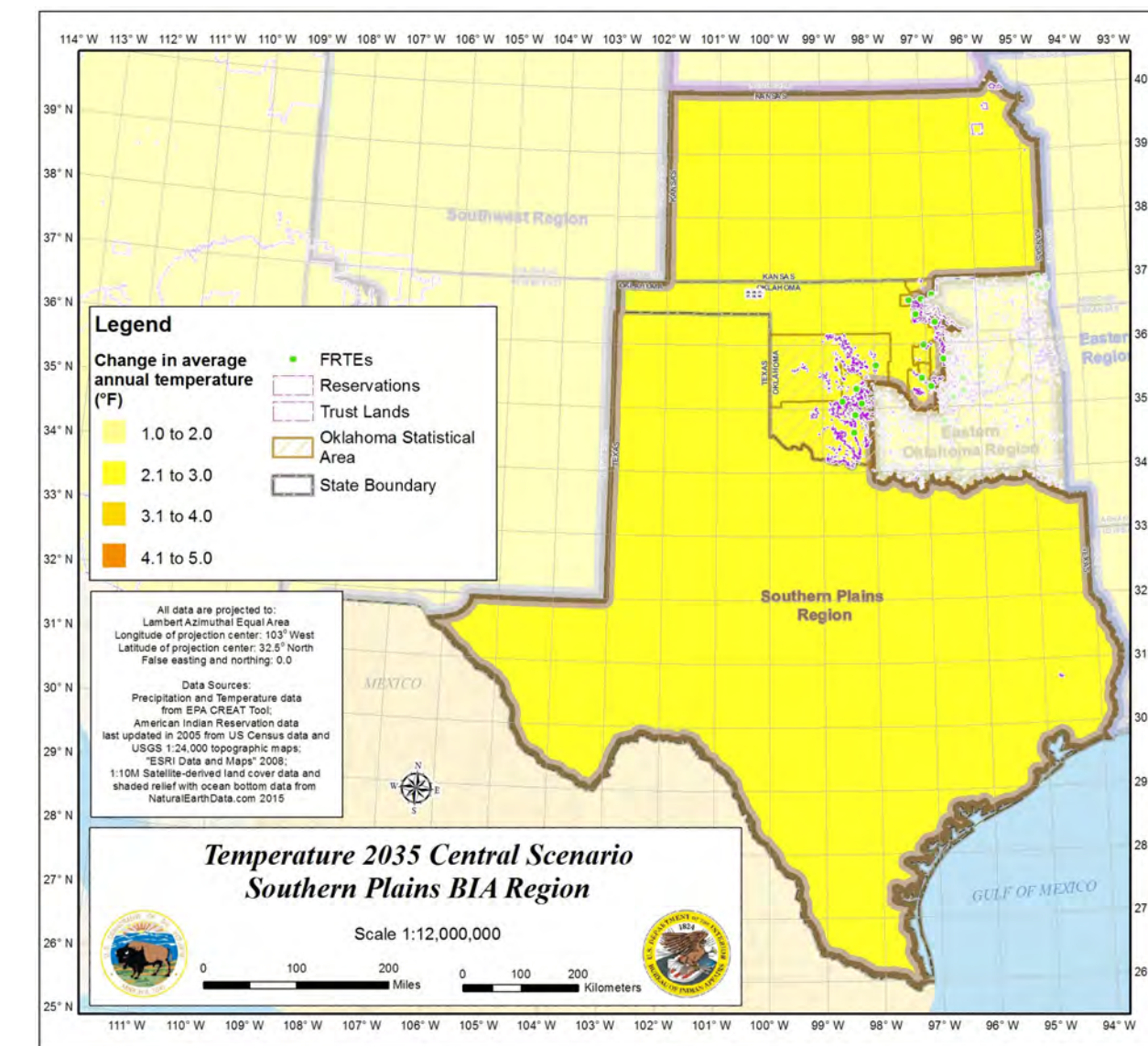
## Temperature Scenarios



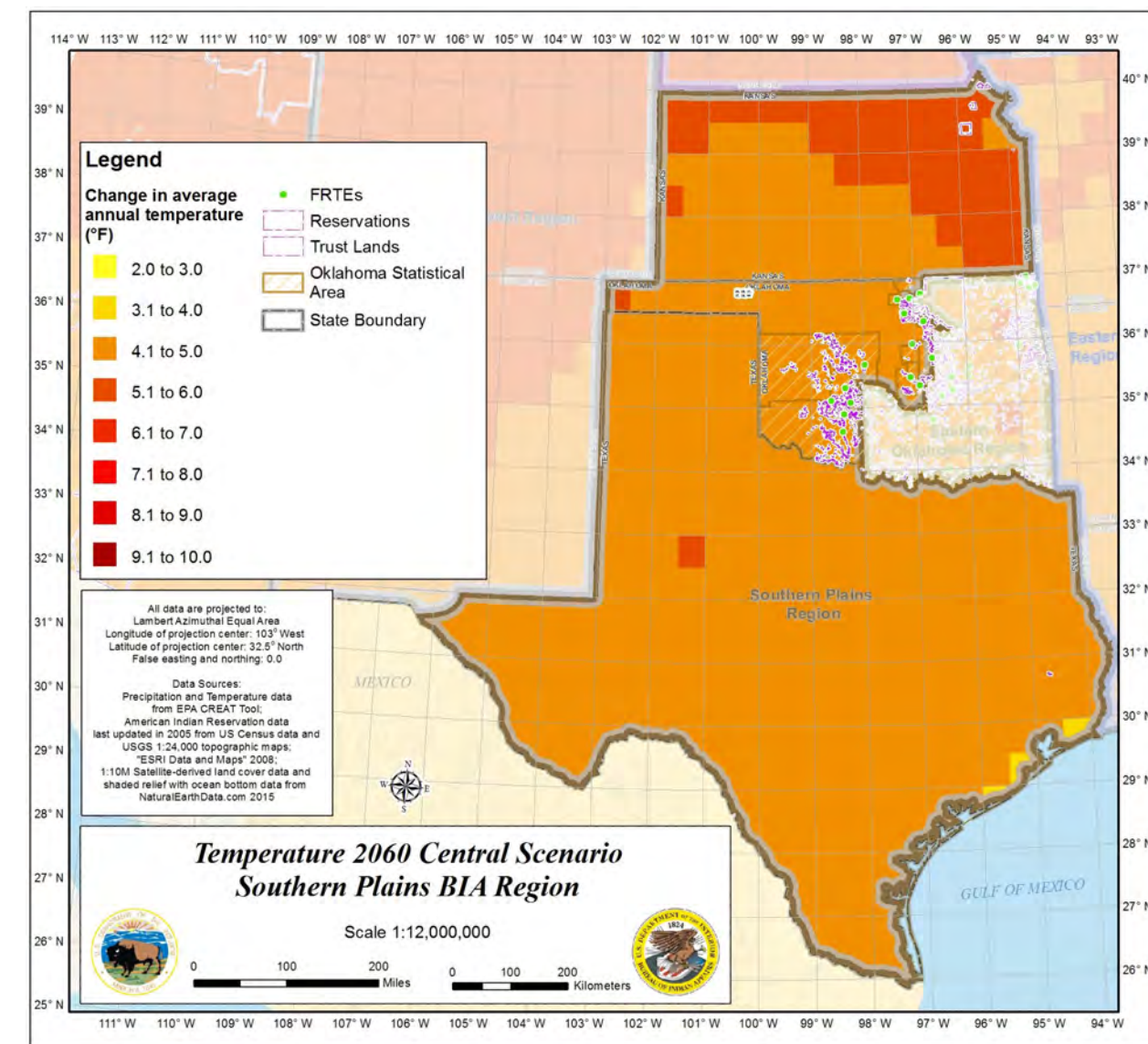
Hot 2035



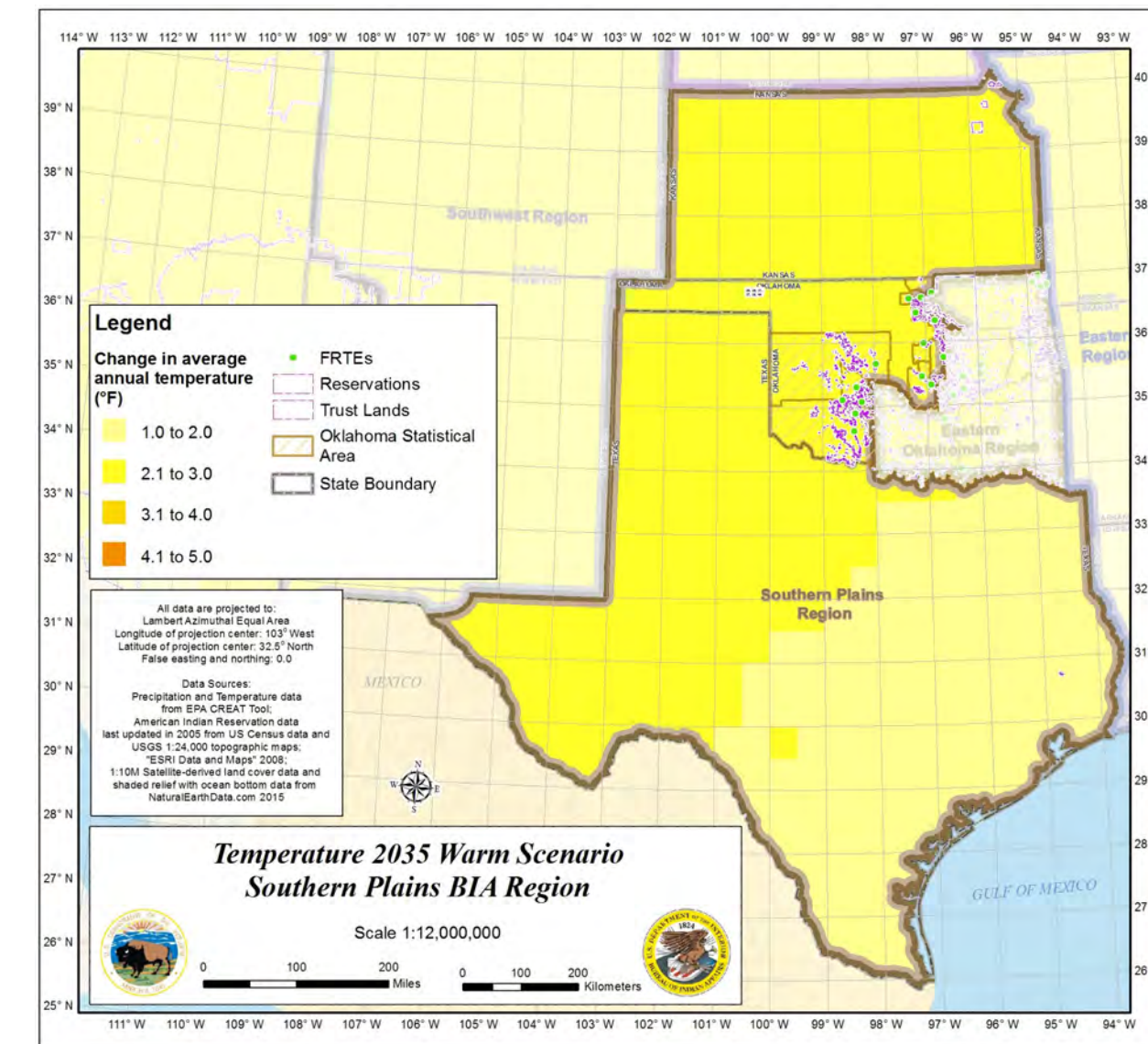
Hot 2060



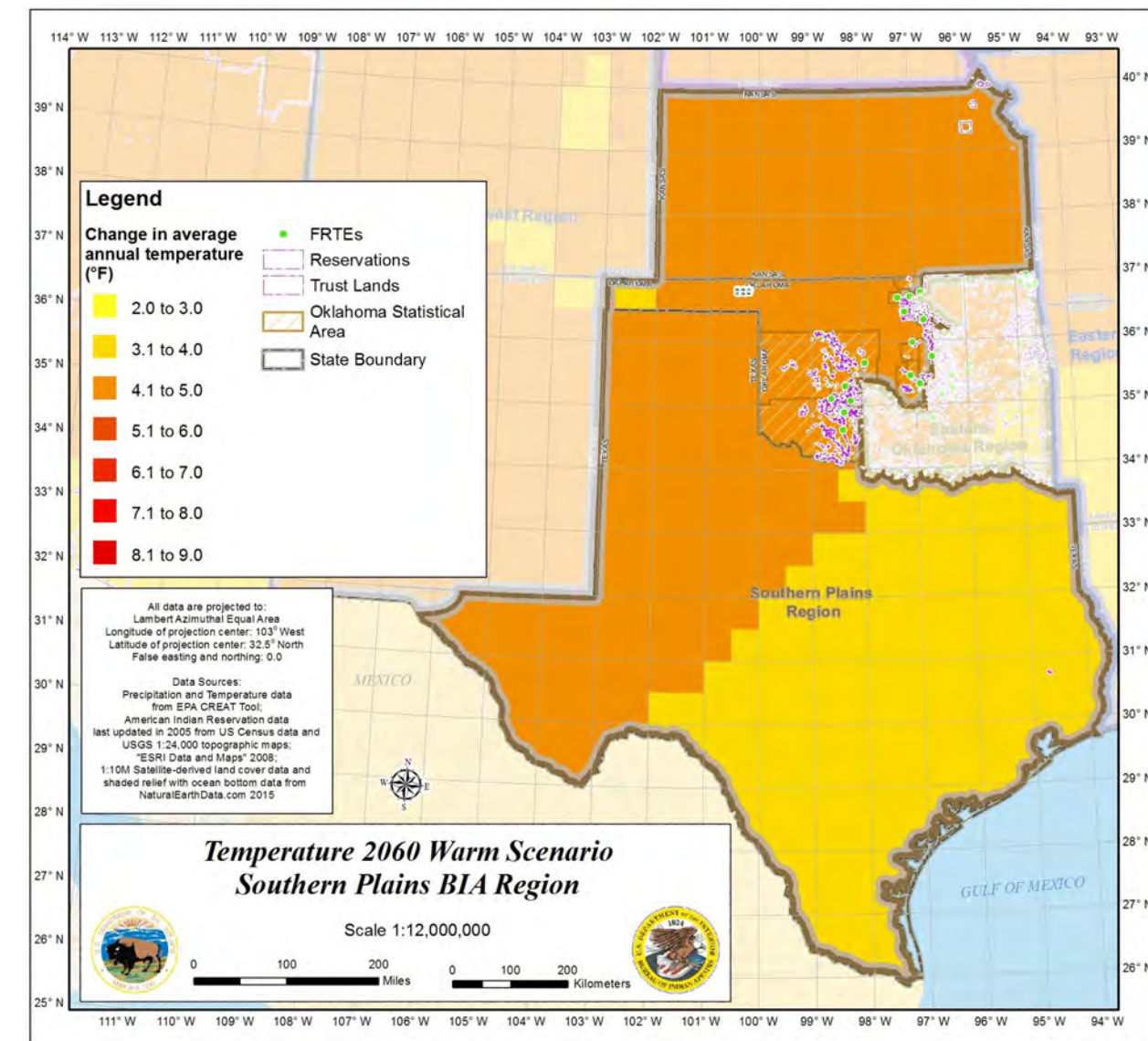
Central 2035



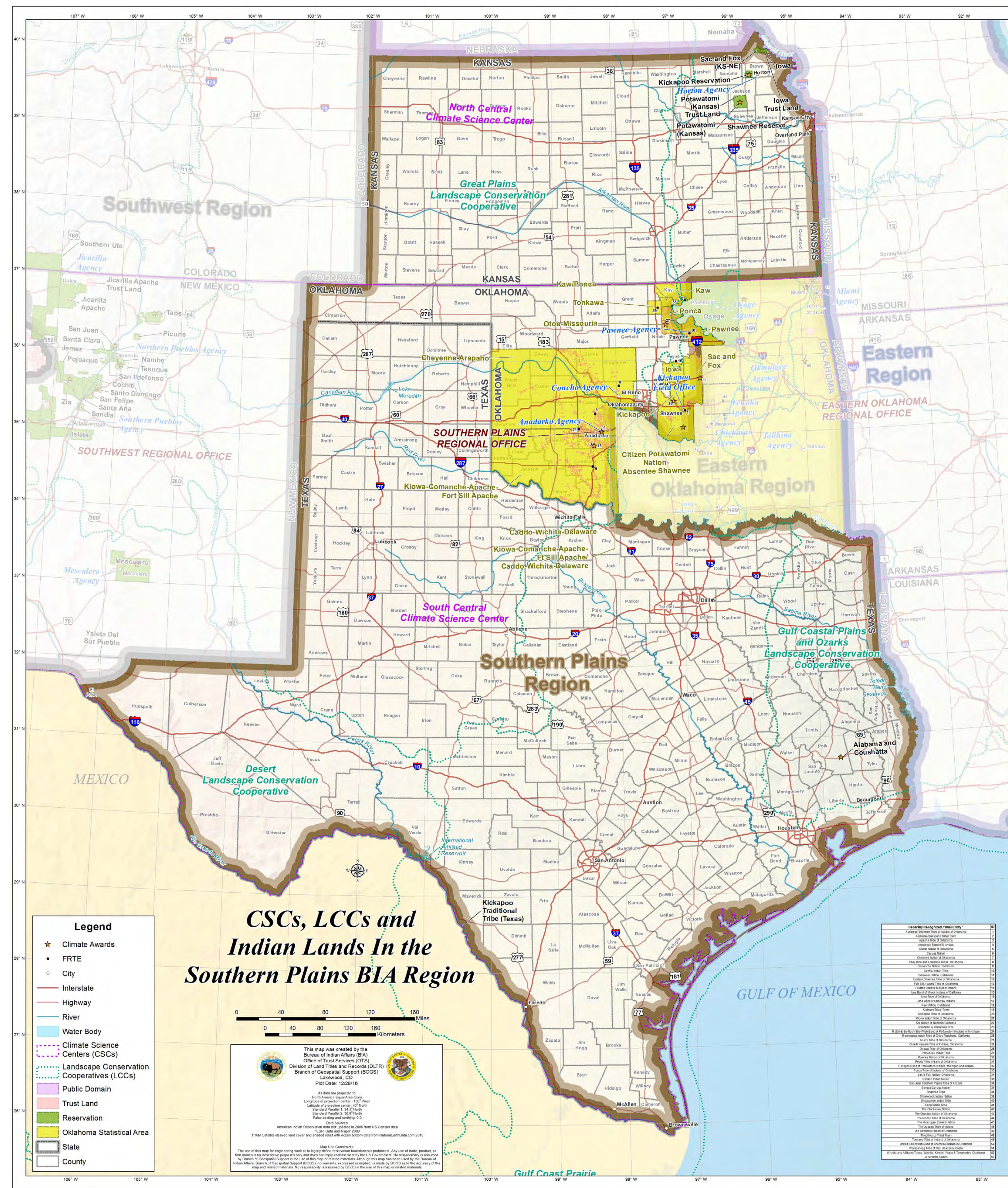
Central 2060



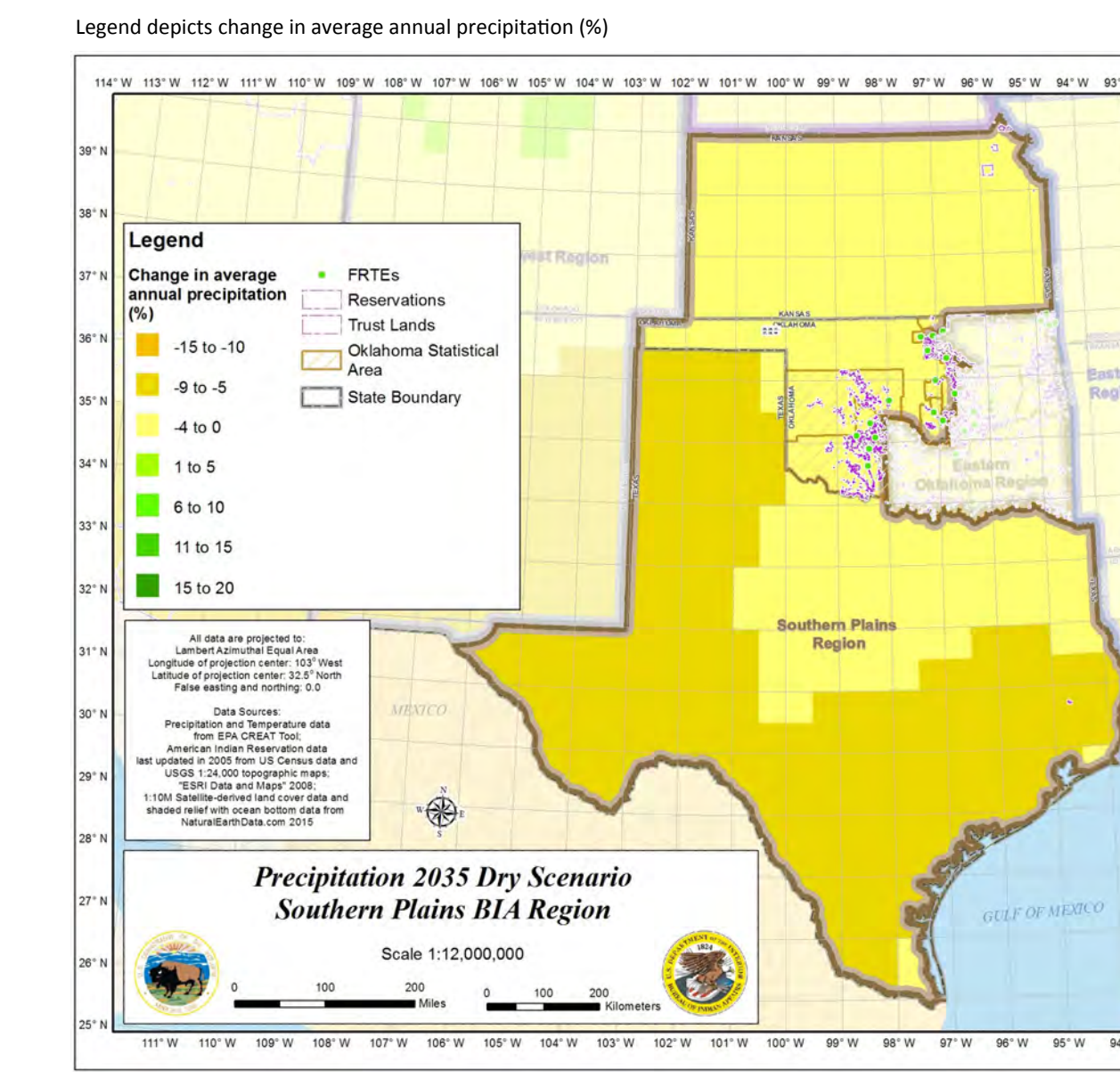
Warm 2035



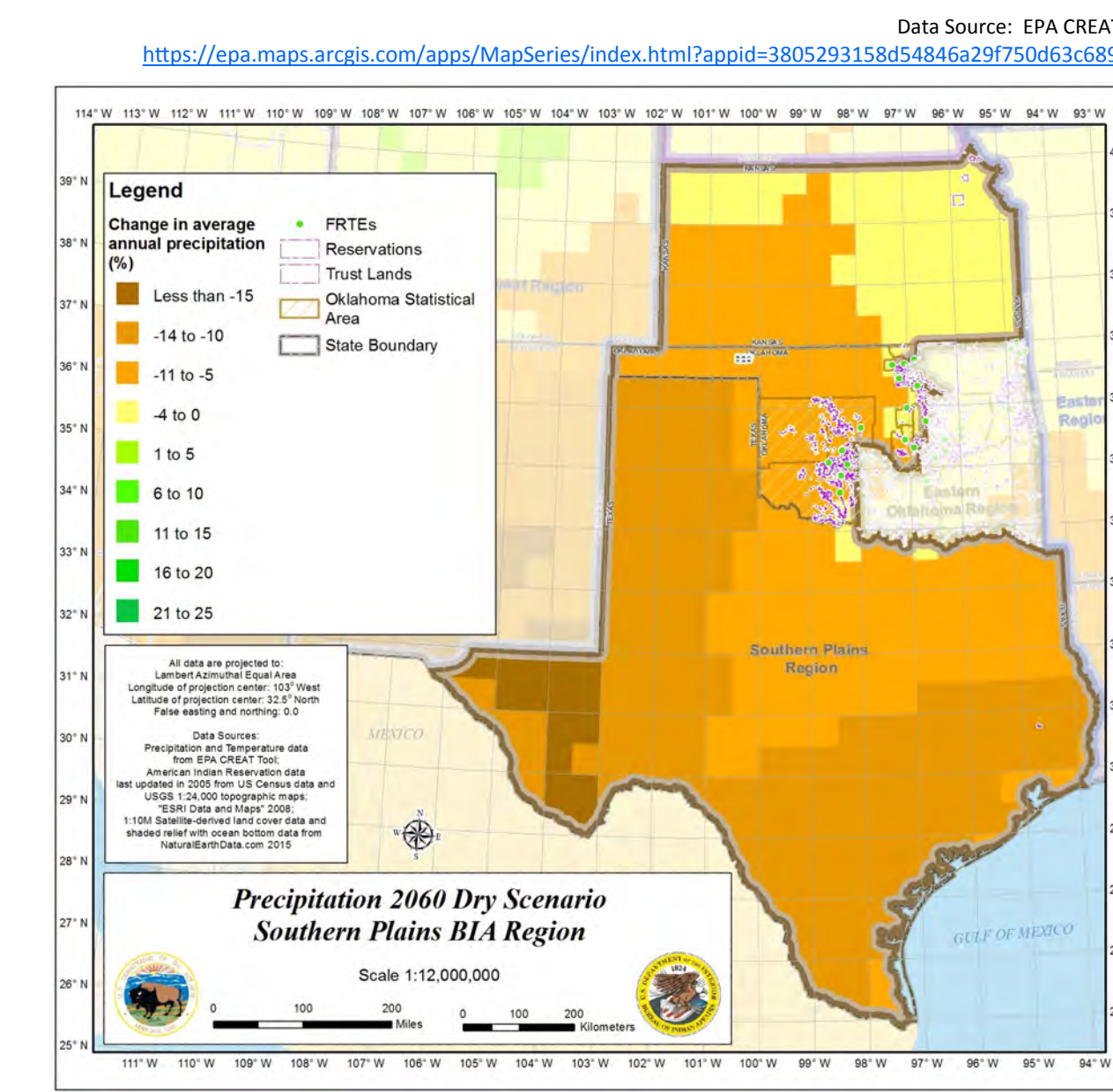
Warm 2060



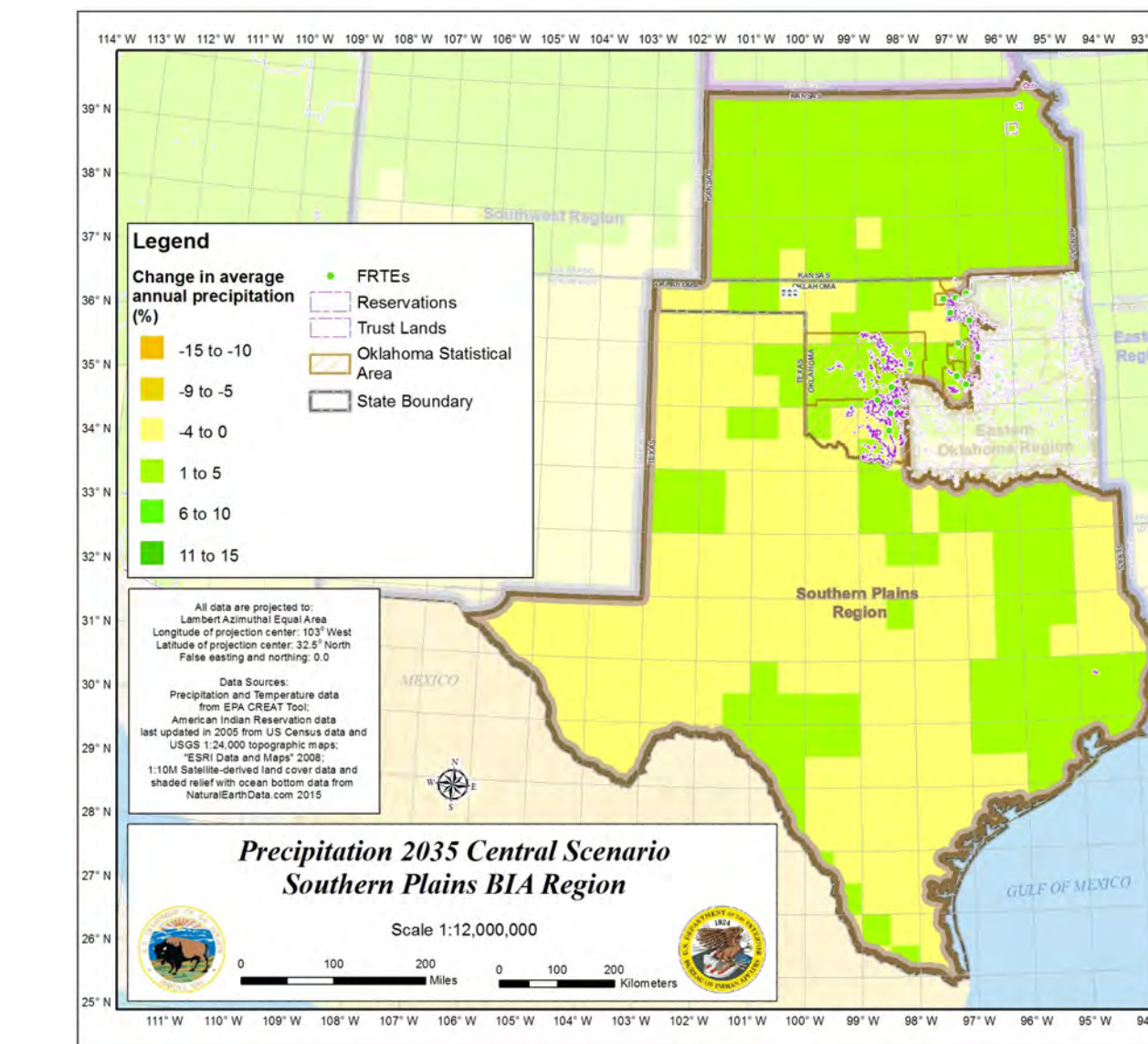
## Precipitation Scenarios



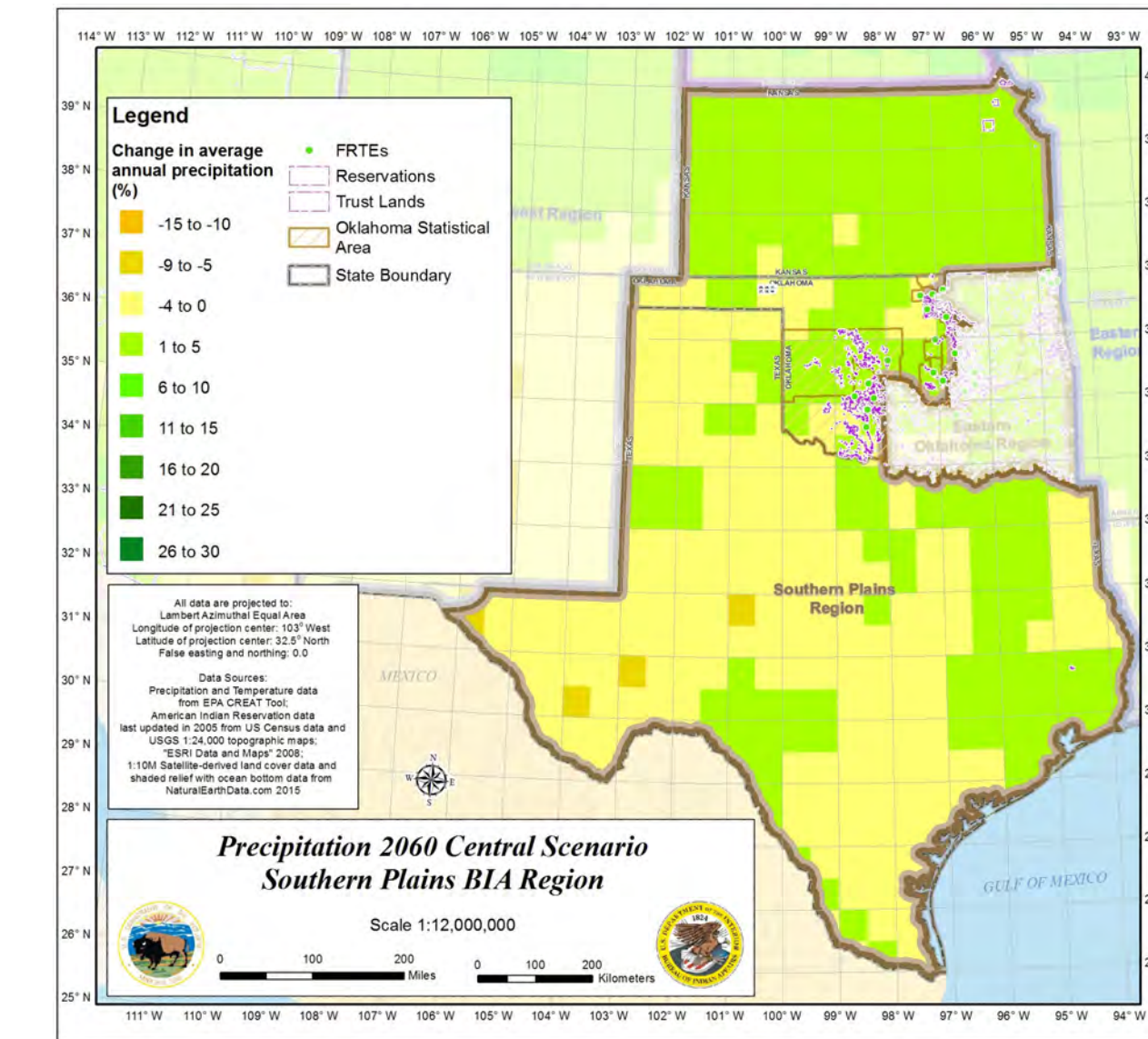
Dry 2035



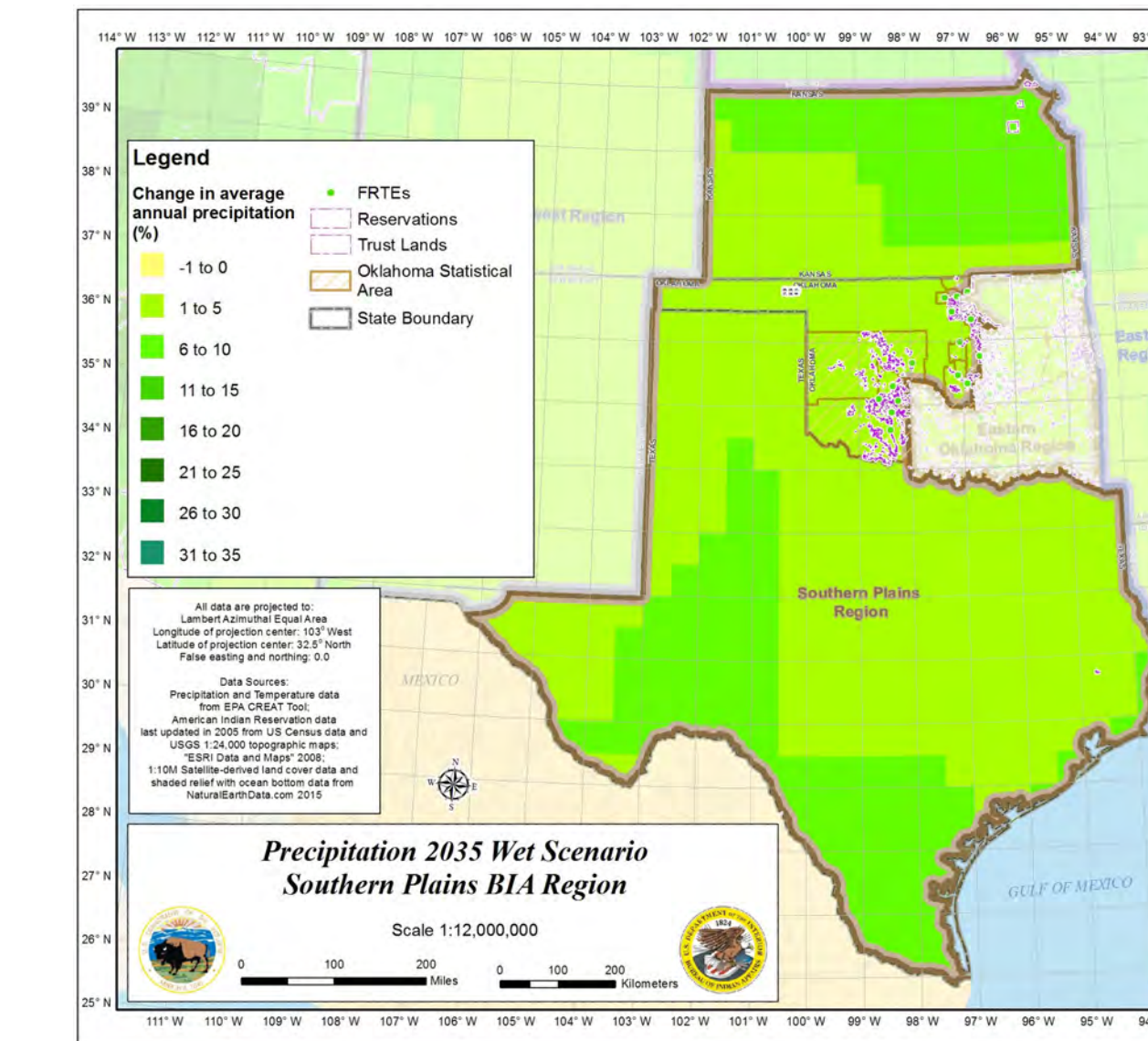
Dry 2060



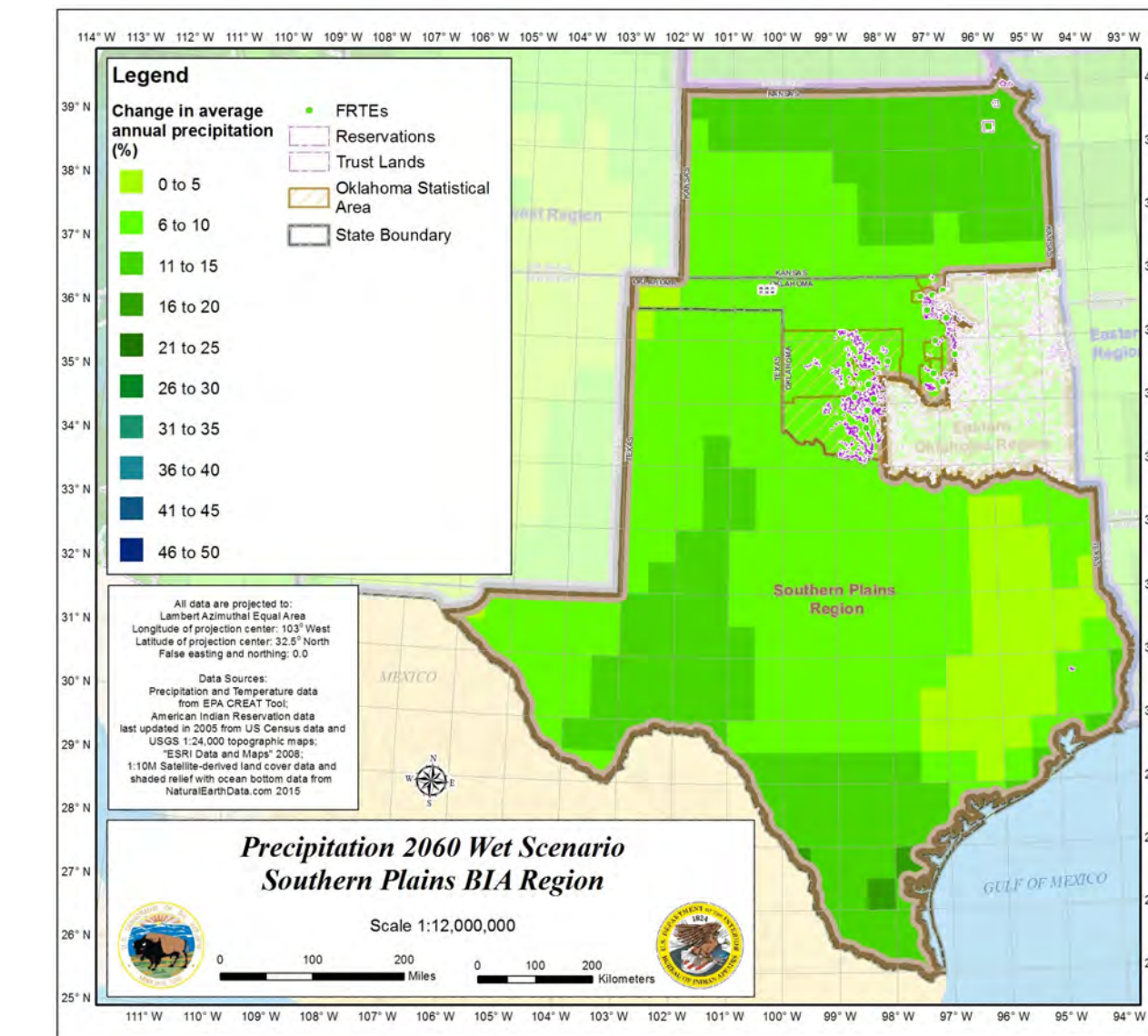
Central 2035



Central 2060

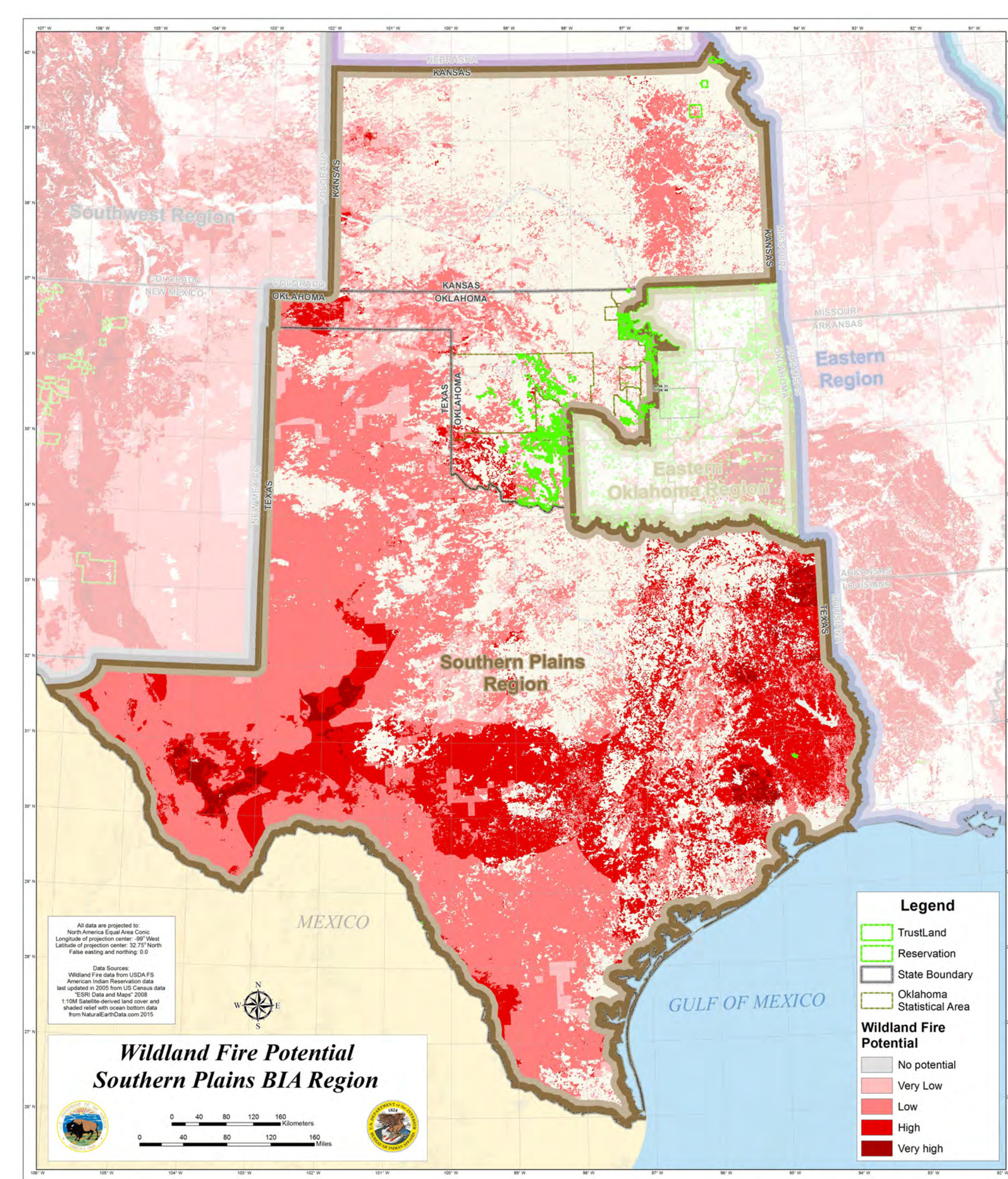


Wet 2035



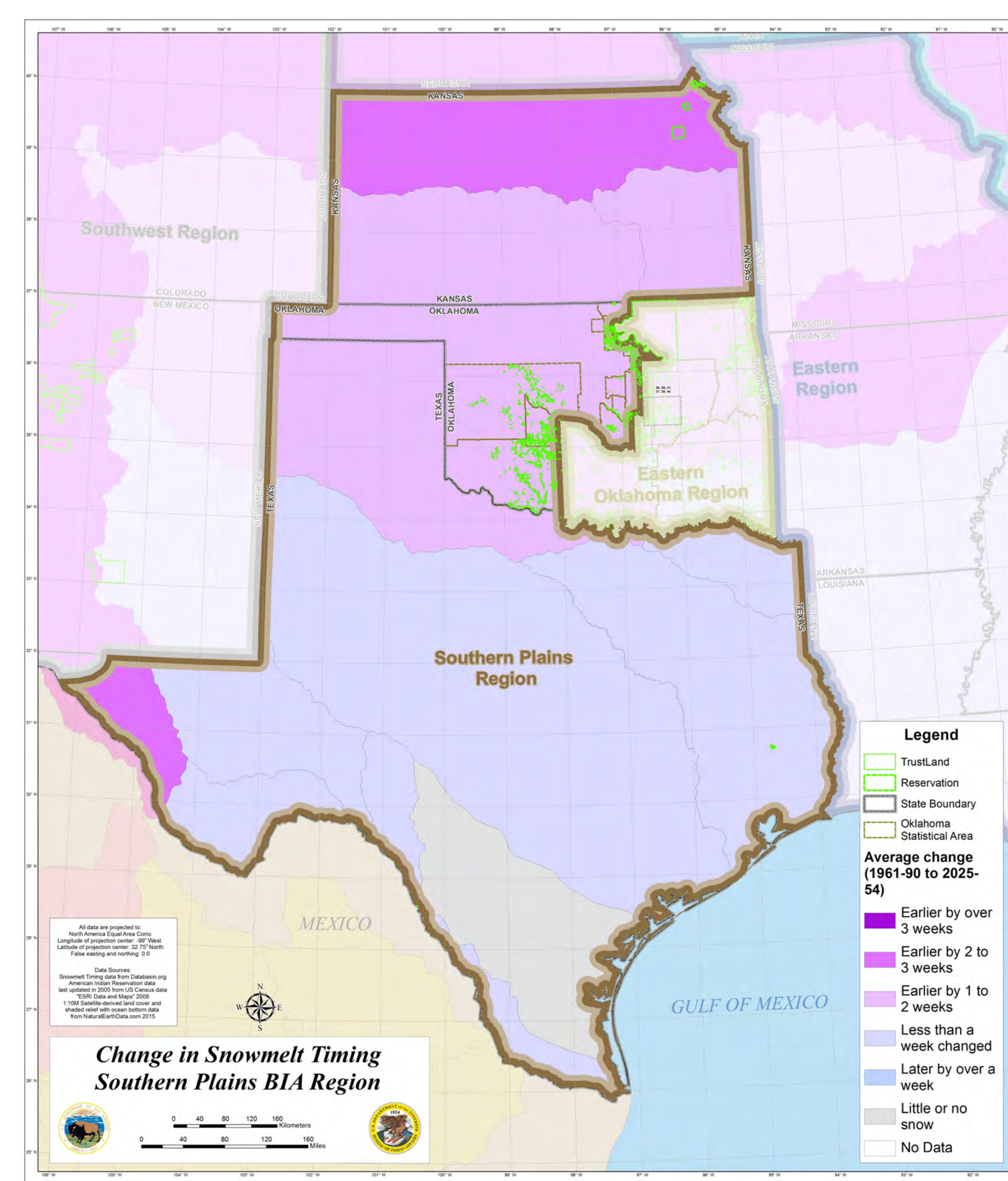
Wet 2060

## Wildland Fire Potential



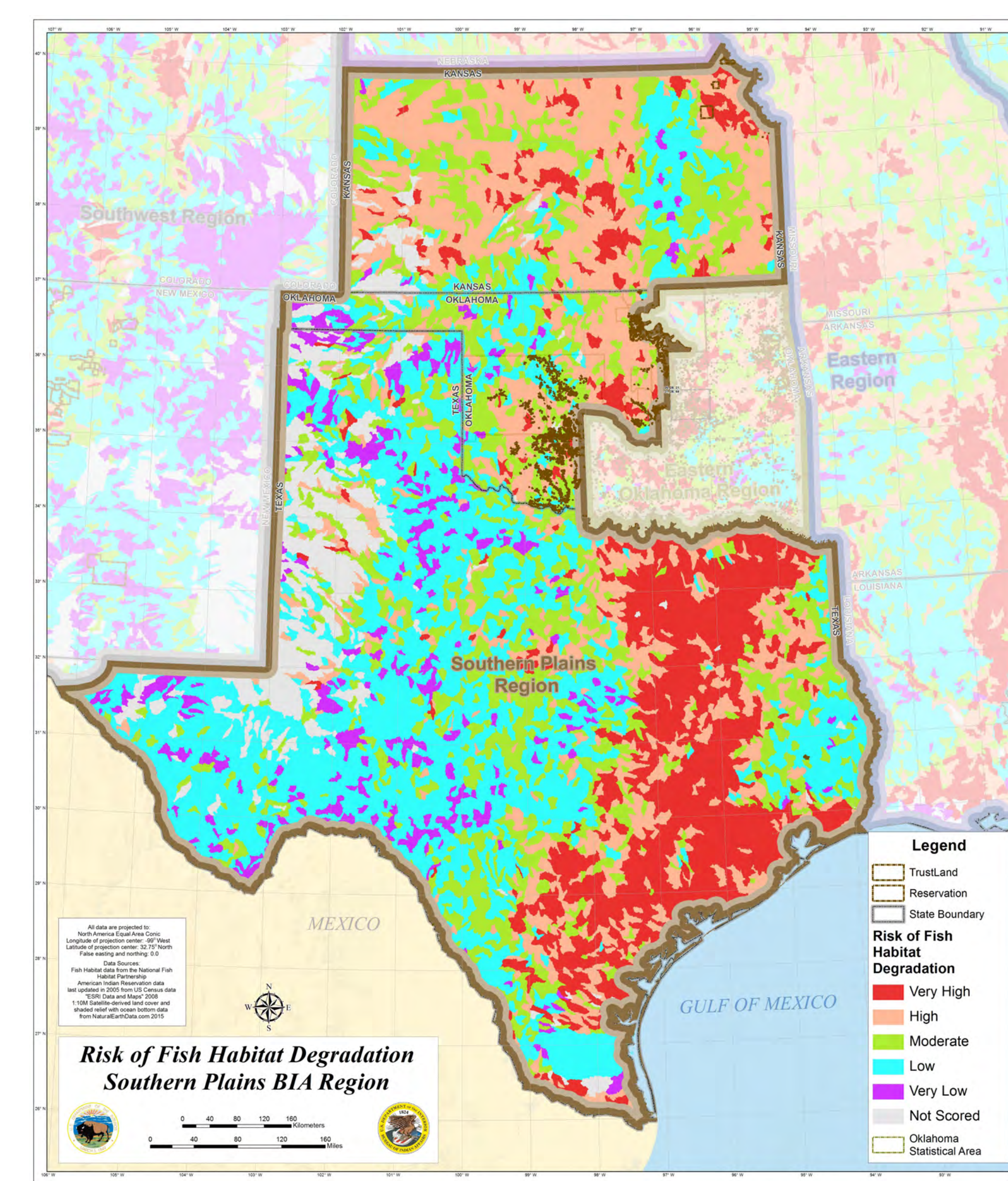
Data Source: USDA FS | [https://data.fs.usda.gov/geodata/feature\\_private/nationaldata](https://data.fs.usda.gov/geodata/feature_private/nationaldata)

## Change in Snowmelt Timing



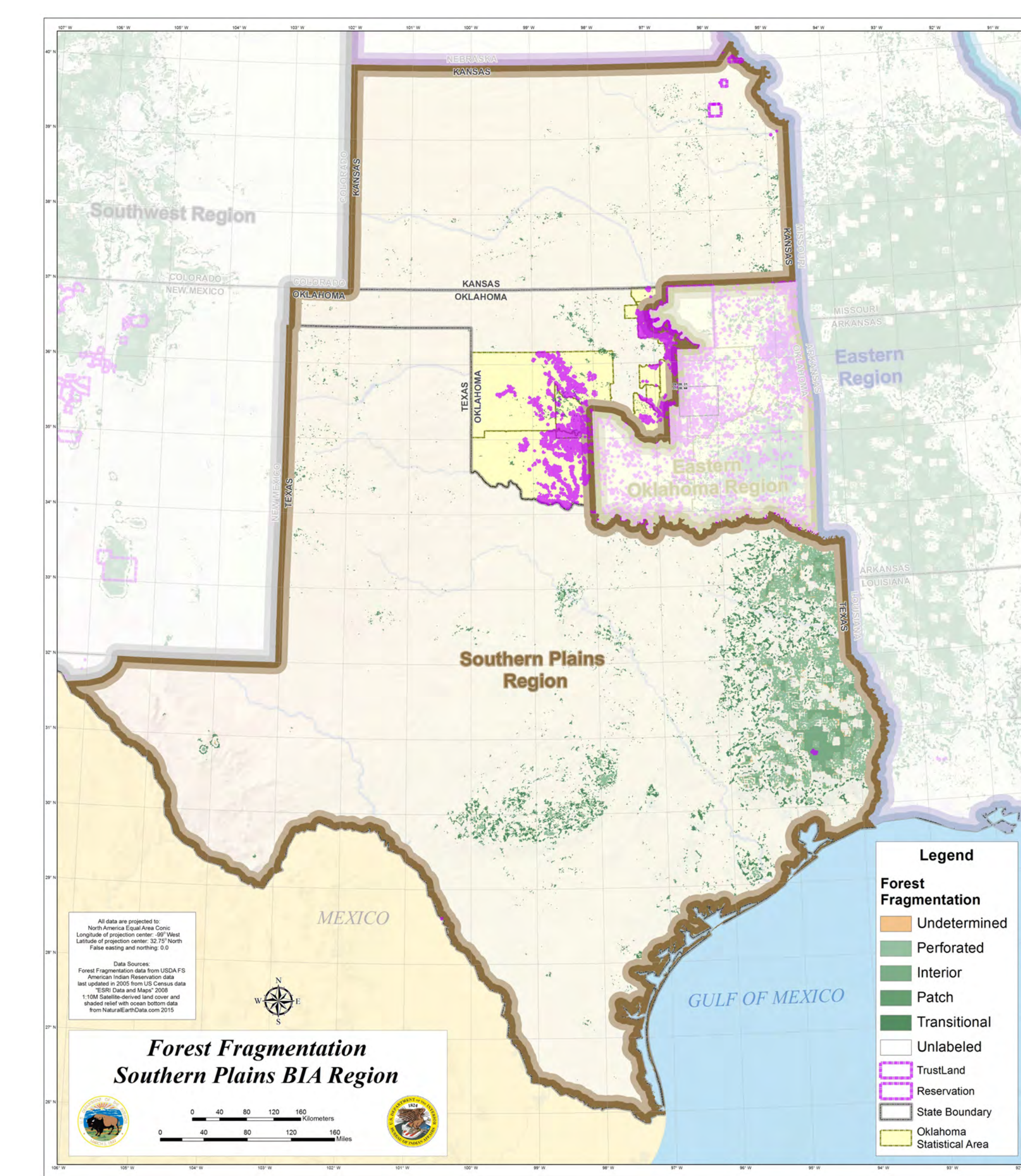
Data Source: Databasing.org | <https://databasing.org/datasets/7819679e4104e46952ce3a79e0c0765>

## Risk of Fish Habitat Degradation



Data Source: National Fish Habitat Partnership | <https://ecosystems.usgs.gov/fishhabitat/viewdataset.asp?hid=50696cc4b0f5392e07b27>

## Forest Fragmentation



Data Source: USDA FS | [https://data.fs.usda.gov/geodata/feature\\_private/nationaldata](https://data.fs.usda.gov/geodata/feature_private/nationaldata)